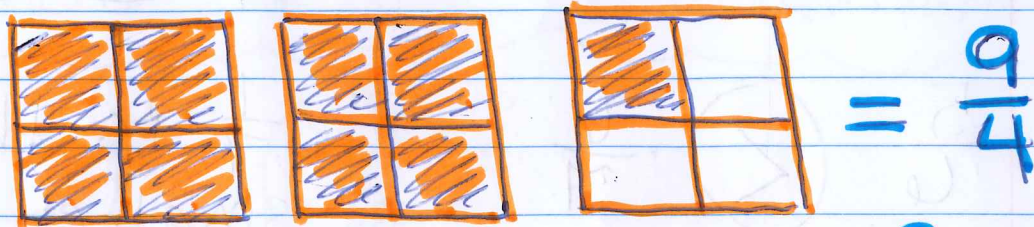


9-22: 1-5 Fractions Greater Than One

Pic. Model

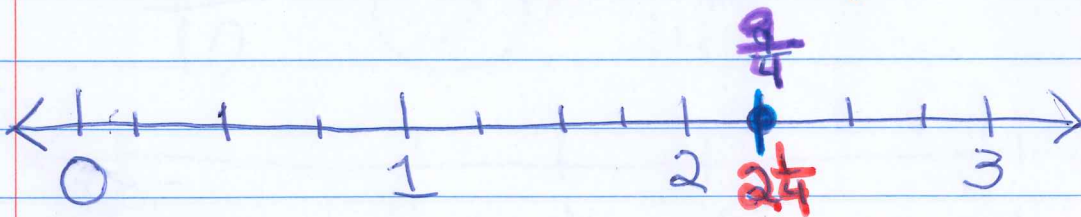


$$\frac{4}{4} + \frac{4}{4} + \frac{1}{4} = \frac{9}{4}$$

$$1 + 1 + \frac{1}{4}$$

$$2 + \frac{1}{4} = 2\frac{1}{4}$$

Number Line Model



Convert Fraction to Mixed

SHORTCUT

$$\frac{9}{4}$$

How many times does 4 go into 9?

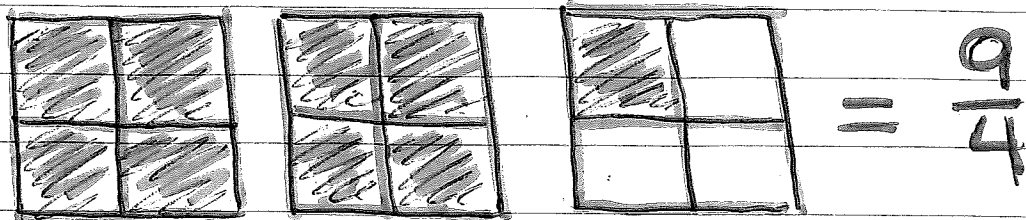
2 1/4

$$\frac{9}{4} = 2\frac{1}{4}$$

$$\left(\frac{-8}{4}\right)$$

9-22: 1-5 Fractions Greater Than One

Pic. Model

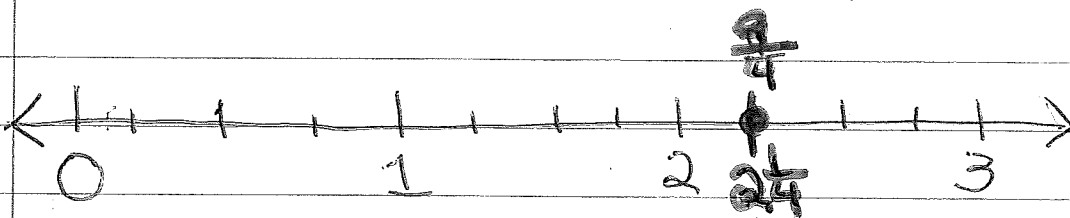


$$\frac{4}{4} + \frac{4}{4} + \frac{1}{4} = \frac{9}{4}$$

$$1 + 1 + \frac{1}{4}$$

$$2 + \frac{1}{4} = 2\frac{1}{4}$$

Number Line Model



Convert Fraction to Mixed

SHORTCUT

$$\frac{9}{4}$$

How many times does 4 go into 9?

$$2 \frac{1}{4}$$

$$\frac{9}{4} = 2 \frac{1}{4}$$

$$\left(\frac{-8}{4} \right)$$

SHORTCUT

Convert Mixed # to Fraction

$$2\frac{1}{4} = \frac{4 \times 2 + 1}{4} = \frac{9}{4}$$

Mixed Number: A number with a whole # and a fraction part

Improper Fraction: A fraction w/ a bigger numerator than denominator (it's bigger than 1)